



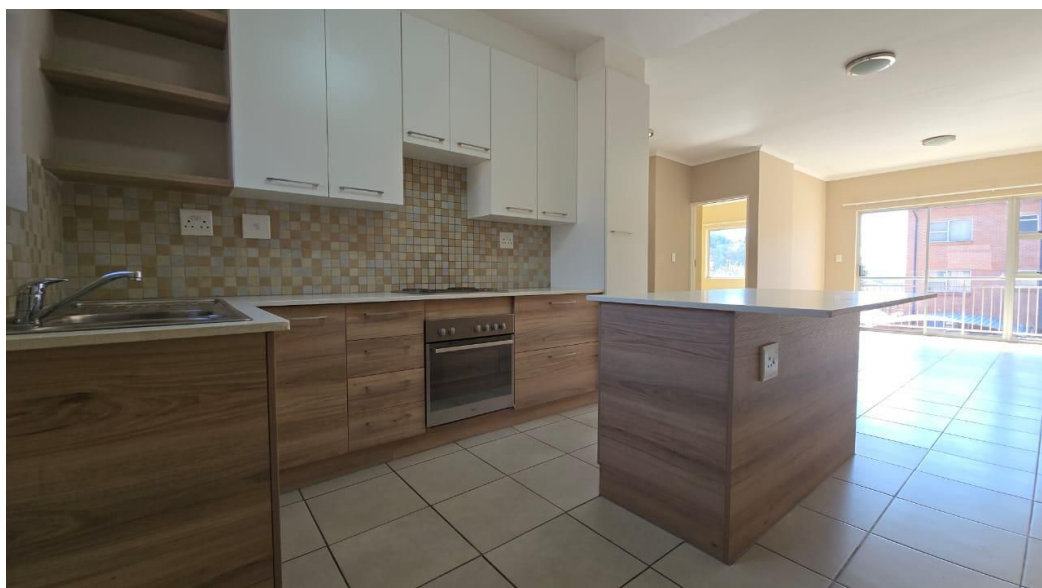
Kobus Eloff - Zambezi
Country Estate &
Montana Park
0812228960
kobus@justimagineproperties.com

Contact Head Office

081 4042817

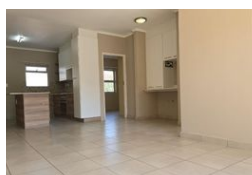
5 Portofino,
753 Old Farm Road,
Faerie Glen
Pretoria

2 Bedroom Apartment For Sale in Montana Park



SOLE MANDATE

Web Ref RL13706



R990,000

2 2

Monthly Bond Repayment R10,050.77

Calculated over 20 years at 10.75% with no deposit.

Transfer Costs R30,412.00 **Bond Costs** R23,335.00

These calculations are only a guide. Please ask your conveyancer for exact calculations.

Monthly Levy R1,800 **Monthly Rates** R720

Modern Upmarket Apartment in Montana Park in complex

This beautiful and contemporary 2-bedroom apartment, each with its own en-suite bathroom, is located in a secure, boomed-off complex with 24-hour security in the desirable Montana Park Suburb. Centrally situated, this unit offers convenient access to schools, shopping centres, healthcare facilities, and main roads and highways

Features:

- Spacious bedrooms with ample built-in cupboards
- Stunning open-plan living area
- Modern kitchen with high-end finishes, abundant cupboard space, and room for all appliances
- Two covered parking spaces allocated to the unit, along with additional guest parking

Enjoy the perfect blend of comfort and convenience in this stylish apartment. Contact us today to arrange a viewing

Words and phrases have strong meanings. The word JUST would refer to being "treated Fair" and "with..."

Features

Interior

Bedrooms	2
Bathrooms	2
Kitchens	1
Recep. Rooms	2
Studies	0.5
Furnished	No

Exterior

Carports / Parkings	2
Security	Yes
Pool	No
Views	False

Sizes

Floor Size	96m ²
------------	------------------

