



Kobus Eloff - Zambezi
Country Estate &
Montana Park
0812228960
kobus@justimagineproperties.com

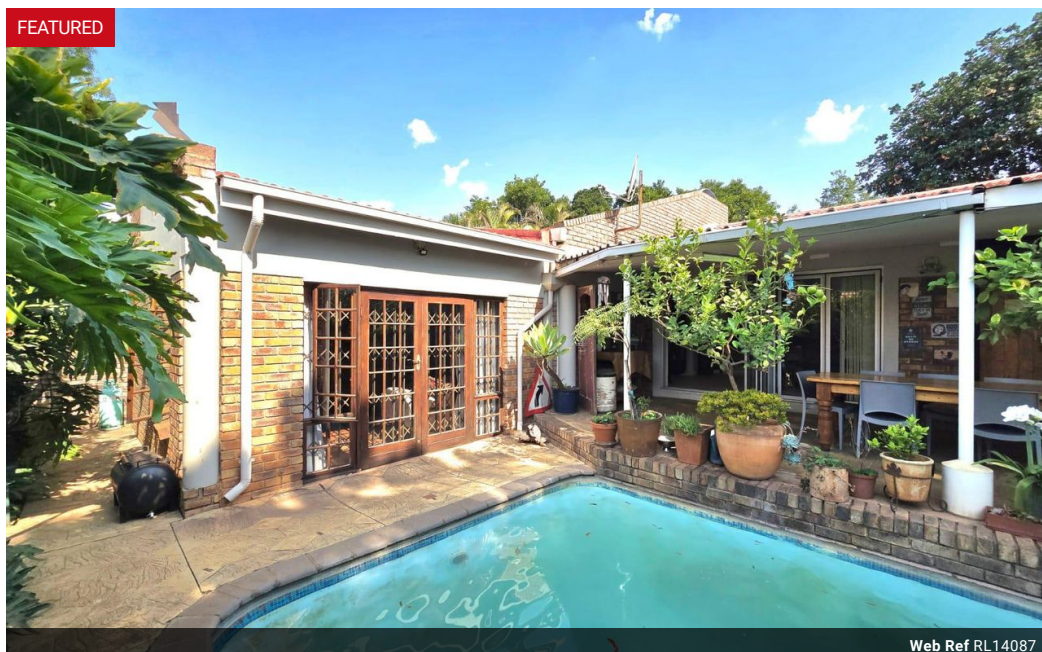
Contact Head Office

081 4042817

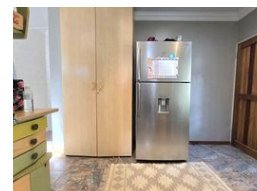
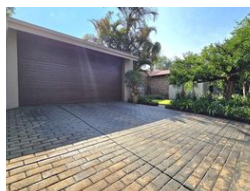
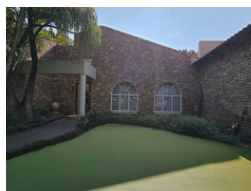
5 Portofino,
753 Old Farm Road,
Faerie Glen
Pretoria

4 Bedroom House For Sale in Montana Park

FEATURED



Web Ref RL14087



R2,800,000

4 2 2

Monthly Bond Repayment R28,426.41

Calculated over 20 years at 10.75% with no deposit.

Transfer Costs R141,887.00 **Bond Costs** R40,300.00

These calculations are only a guide. Please ask your conveyancer for exact calculations.

Monthly Rates R1,170

Serene Family Home with Flatlet for Sale in Montana Park

Located in a serene, quiet street in Montana, this spacious family home is packed with potential and a host of standout features.

The open-plan layout creates an inviting flow between the lounge, dining room, and a versatile family/entertainment room. With four generously sized bedrooms, of which two are en-suite and three bathrooms, this home provides plenty of space for comfortable family living.

The kitchen, complete with a pantry, scullery, gas stove, granite countertops, and ample built-in cupboards, offers both style and practicality. There's also room for all your essential appliances.

At the back of the property, the entertainment room is an ideal gathering spot, featuring a built-in braai, a designated cooking area, and a bar. From the dining room, step out onto a spacious patio that overlooks a sparkling...

Features

Pets Allowed Yes

Interior

Bedrooms	4
Bathrooms	2
Kitchens	1
Recep. Rooms	2
Studies	2
Furnished	No

Exterior

Garages	2
Carports / Parkings	6
Security	Yes
Dom. Accom.	1
Pool	Yes
Views	False

Sizes

Floor Size	350m ²
Land Size	1,120m ²

Extras

5000 liter water tank/ filtering system Bar 2 Gas geysers Generator read 2nd braai in the garden area Main bedroom has dressing room Extremely spacious Study for 2 to 3 people

