



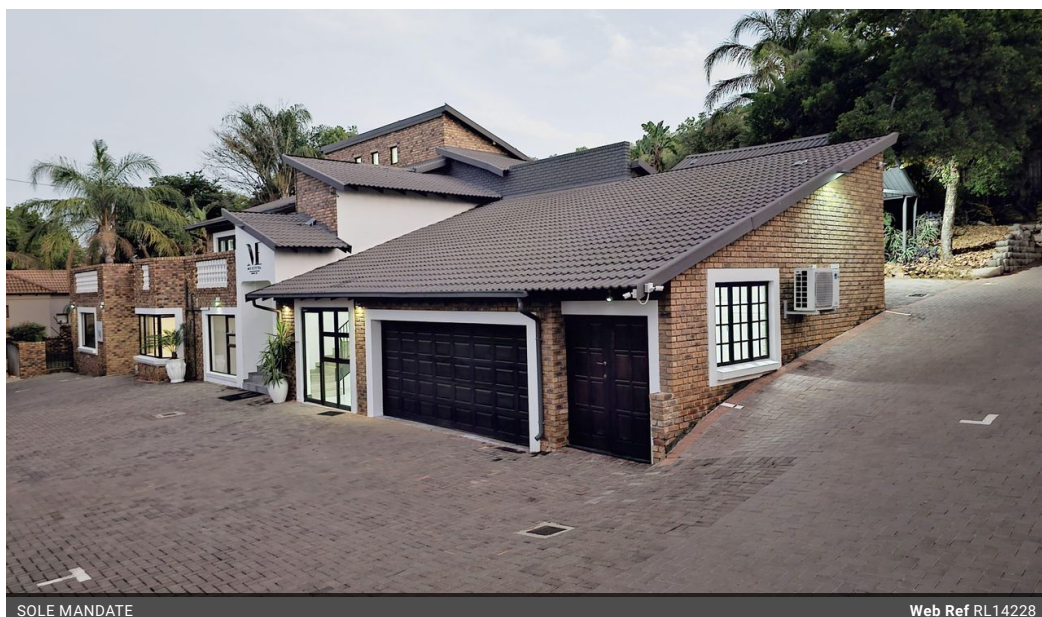
Kobus Eloff - Zambezi
Country Estate &
Montana Park
0812228960
kobus@justimagineproperties.com

Contact Head Office

081 4042817

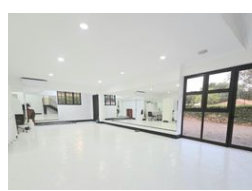
5 Portofino,
753 Old Farm Road,
Faerie Glen
Pretoria

4 Bedroom House For Sale in Montana Park



SOLE MANDATE

Web Ref RL14228



R3,200,000

4 4 3

Monthly Bond Repayment R32,487.33

Calculated over 20 years at 10.75% with no deposit.

Transfer Costs R184,379.00 **Bond Costs** R44,070.00

These calculations are only a guide. Please ask your conveyancer for exact calculations.

Monthly Rates R2,080

Ultra-Modern & Elegant 4-bedroom Mansion with Apartment, above Besembiesie street in Montana Park

Ultra-Modern 4-Bedroom Property for Sale in Montana Park

Discover the potential of this stunning property in Montana Park, set against a serene cul-de-sac with mountain views. Currently configured as a beauty spa, it offers flexibility for Residential or Business use. With its sophisticated and modern interiors, this home is a perfect blend of functionality and luxury, ready for the high-end lifestyle.

Property Highlights:

Kitchen:

Spacious and functional kitchen with separate scullery. The flatlet have its own kitchenette.

Expansive, double volume Living Areas:

Enter through an Ultra-Modern reception area with a welcoming staircase and four spacious large open-plan living areas, filled with natural light. The high ceilings and elegant chandeliers create a sophisticated atmosphere.

4 Bedrooms:

All en-suite

Features

Pets Allowed		Yes	
Interior		Exterior	
Bedrooms	4	Garages	3
Bathrooms	4	Carports / Parkings	2
Kitchens	2	Security	Yes
Recep. Rooms	5	Dom. Accom.	1
Studies	2	Pool	Yes
Furnished	No	Views	False

Extras

Cul-De-Sac Parking in stand for 25 plus cars Two-bedroom Flatlet with separate entrance
Playroom/ gym/ or another flatlet with separate entrance Irrigation Aircons Fibre

