



Kobus Eloff - Zambezi
Country Estate &
Montana Park
0812228960
kobus@justimagineproperties.com

Contact Head Office

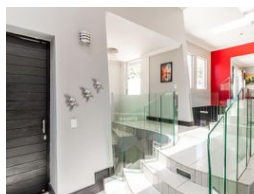
081 4042817

5 Portofino,
753 Old Farm Road,
Faerie Glen
Pretoria

4 Bedroom House For Sale in Montana Park



Web Ref RL14462



R6,225,000

4 5 4

Monthly Bond Repayment R63,198.00

Calculated over 20 years at 10.75% with no deposit.

Transfer Costs R548,516.00 **Bond Costs** R70,535.00

These calculations are only a guide. Please ask your conveyancer for exact calculations.

Monthly Rates R2,897

Furnished, contemporary and elegant home, in boomed off cul-de-sac for sale in Montana Park

Magnificent Double-Storey Home in Montana Park - A Masterpiece of Luxury & Comfort!

This architectural gem in Montana Park is the epitome of modern luxury, nestled in a secure cul-de-sac with controlled access. From exquisite finishes to unparalleled entertainment spaces, every detail has been designed for sophistication and comfort.

Key Features That Set This Home Apart

Ground Floor - The Heart of the Home

Grand Entrance: Step into elegance with a stylish double-volume foyer, setting the tone for this breathtaking home. Natural light through out the house.

Open-Plan Living & Dining: A seamless flow between the designer kitchen, spacious lounge, and dining area makes this home perfect for entertaining and family living.

State-of-the-Art Kitchen: Featuring high-end appliances, sleek cabinetry, and ample counter...

Features

Pets Allowed Yes

Interior

Bedrooms	4
Bathrooms	5
Kitchens	1
Recep. Rooms	2
Studies	1
Furnished	Yes

Exterior

Garages	4
Carports / Parkings	6
Security	Yes
Dom. Accom.	1
Pool	Yes
Views	False

Sizes

Floor Size	760m ²
Land Size	1,045m ²

