



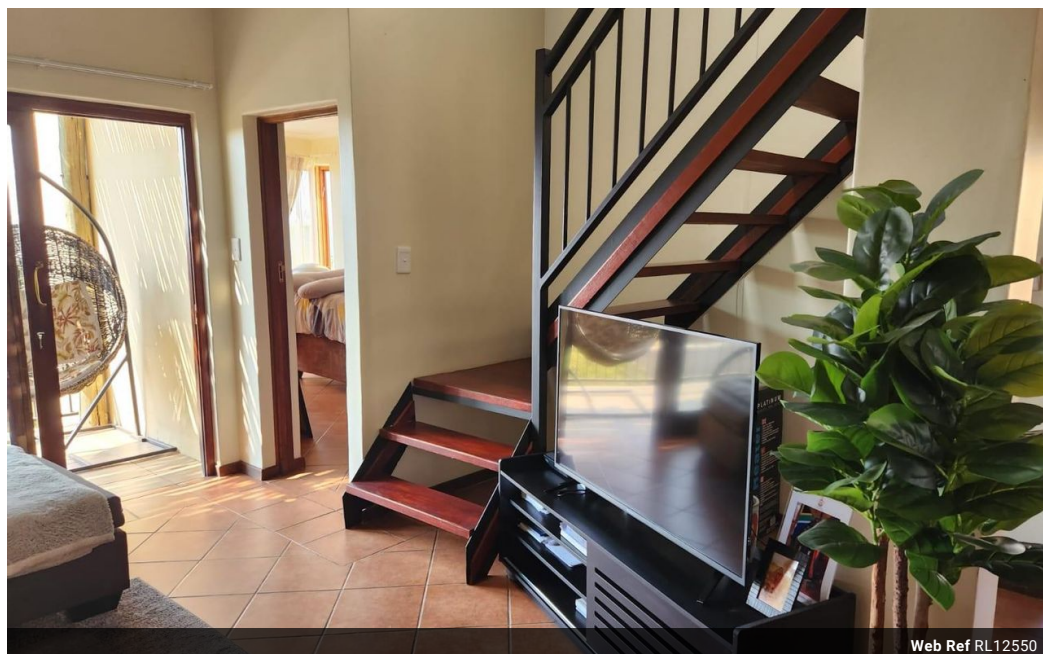
Pierre Mouton -
Montana & Montana
Tuine
0845567812
pierre@justimagineproperties.com

Contact Head Office

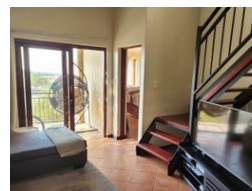
081 4042817

5 Portofino,
753 Old Farm Road,
Faerie Glen
Pretoria

3 Bedroom Apartment For Sale in Montana Tuine



Web Ref RL12550



R849,000

3 2

Monthly Bond Repayment R8,619.29

Calculated over 20 years at 10.75% with no deposit.

Transfer Costs R28,244.00 **Bond Costs** R21,450.00

These calculations are only a guide. Please ask your conveyancer for exact calculations.

Monthly Levy R2,800 **Monthly Rates** R600

Beautiful apartment in Montana Tuine

This lovely apartment has so many extra special features, you will not want to miss out.

The unit has an open plan living area with a spacious balcony through wooden sliding doors. The entrance into the apartment is into the kitchen with granite counter tops, ample storage and space for washing machine.

Also on the first floor is the master bedroom with en suite bathroom. Upstairs is another bedroom with a family bathroom. The big loft can be used as a third bedroom, office or extra living space. From the loft a second, large entertaining balcony can be accessed through a wooden door.

The estate has communal areas with braai facilities and swimming pools, plus extensive gardens.

The levy for this property includes water, security, building maintenance and communal maintenance.

Words and phrases have strong meanings....

Features

Interior

Bedrooms	3
Bathrooms	2
Kitchens	1
Recep. Rooms	1
Furnished	No

Exterior

Carports / Parkings	2
Security	Yes
Pool	Yes
Views	False

Sizes

Floor Size	93m ²
------------	------------------

