



Pierre Mouton -  
Montana & Montana  
Tuine  
0845567812  
pierre@justimagineproperties.com

Contact Head Office

081 4042817

5 Portofino,  
753 Old Farm Road,  
Faerie Glen  
Pretoria

## On Show

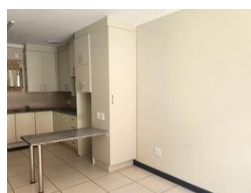
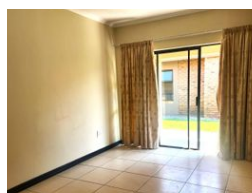
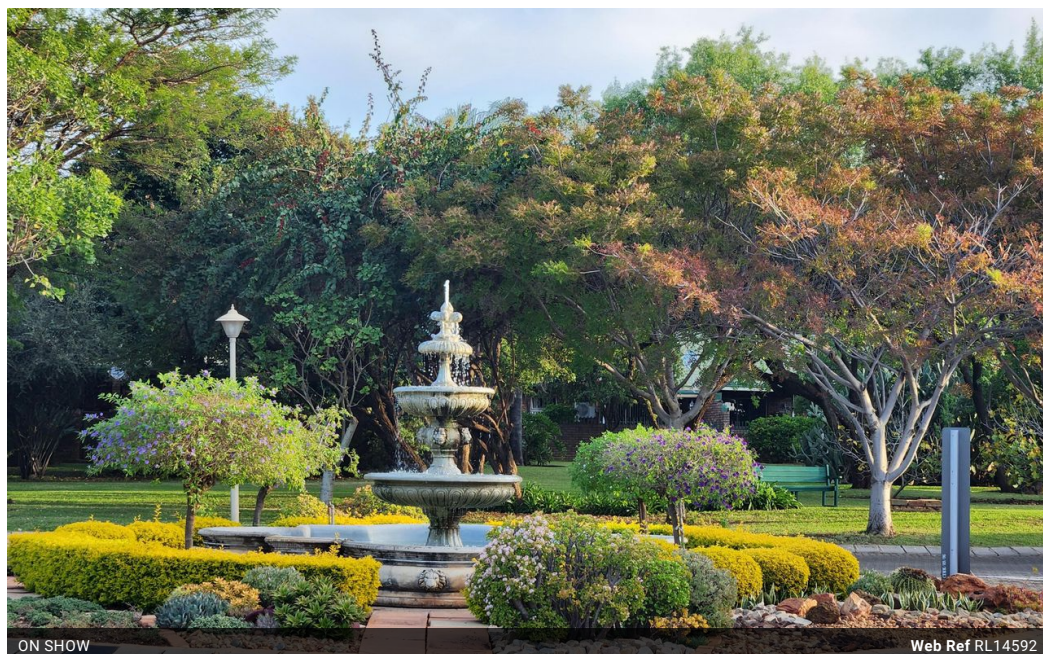
🕒 10:00 to 14:00

📅 Saturday, 02 August 2025

### Directions

To view this property please contact the agent, Pierre, at 0845567812 for an appointment

## 1 Bedroom Retirement Unit For Sale in Montana Tuine



**R1,068,000**

🛏 1 🚿 1

**Monthly Bond Repayment** R10,842.65

Calculated over 20 years at 10.75% with no deposit.

**Transfer Costs** R32,749.00 **Bond Costs** R25,220.00

These calculations are only a guide. Please ask your conveyancer for exact calculations.

**Monthly Levy** R1,182 **Monthly Rates** R485

You can retire with the knowledge that your safety, comfort and peace is a priority.

Zambesi Retirement Village is proud of being a very well managed facility with a sense of space and beautiful, well kept, natural grounds.

The village provides all you need, plus a little bit more. It has a frail care unit for specialised care plus it has a vibrant, multi-functional social community.

The village is nestled on a terrain with lots of space and beauty for long, peaceful hikes.

This unit has one bedroom with one bathroom and an open plan living area and kitchen, is North facing for winter comfort and has a sliding door with small patio.

The property is part of the frail care service in the village.

It is the only...

## Features

### Interior

Bedrooms	1
Bathrooms	1
Kitchens	1
Recep. Rooms	1
Furnished	No

### Exterior

Security	Yes
Pool	No
Views	False

### Sizes

Floor Size	53m²
------------	------

