



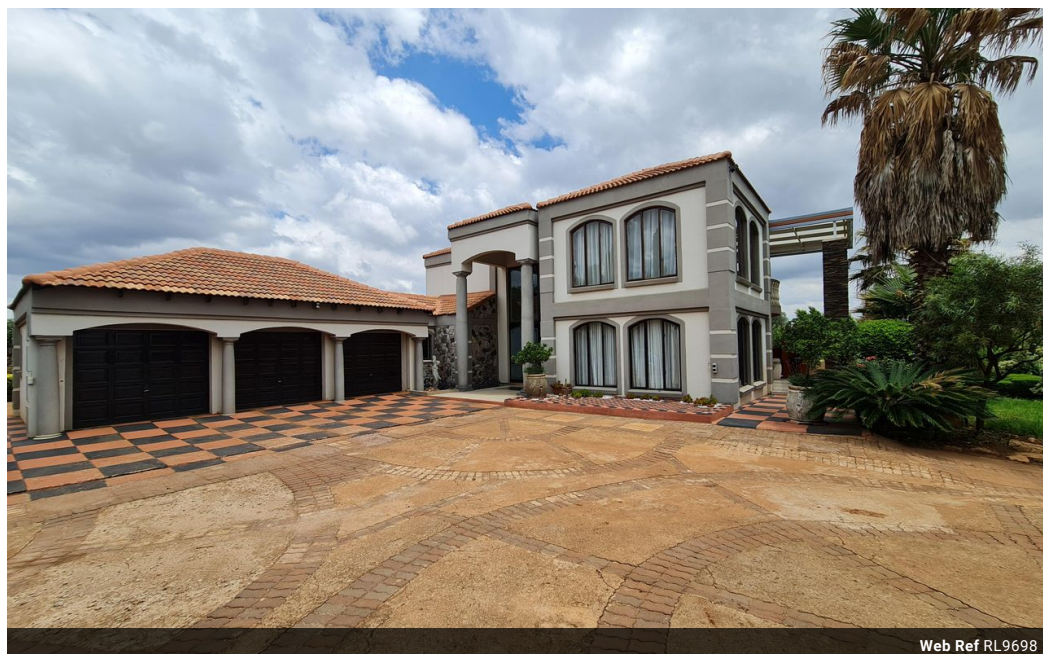
Rohann Mattheus -
Faerie Glen

0649142598
rohann@justimagineproperties.com

Contact Head Office

081 4042817

5 Portofino,
753 Old Farm Road,
Faerie Glen
Pretoria



Web Ref RL9698



R4,000,000

 4  3.5  3

Monthly Bond Repayment R40,609.16

Calculated over 20 years at 10.75% with no deposit.

Transfer Costs R281,050.00 **Bond Costs** R51,610.00

These calculations are only a guide. Please ask your conveyancer for exact calculations.

Monthly Rates R2,100

Modern spacious family home on 1.37 hectar stand

This modern and spacious family home is situated in the popular Rietvlei View Country estate.

It offers 4 bedrooms, 3.5 bathrooms, big kitchen with pantry, scullery and laundry room, 3.5 living areas and an entertainment room walking out onto a patio as well as a big study/office.

2 balconies round the property off.

The property also features 2 domestic quarters, each with its own bathroom lending it to the possibility of being converted to flatlets.

3 garages and a store room is also found.

A lapa with built-in braai and a big boma promises many fun-filled hours with friends and family.

A must see property,

Words and phrases have strong meanings. The word JUST would refer to being treated Fair and with Respect.

Features

Pets Allowed Yes

Interior

Bedrooms	4
Bathrooms	3.5
Kitchens	1
Recep. Rooms	3.5
Studies	1
Furnished	No

Exterior

Garages	3
Security	Yes
Dom. Accom.	2
Pool	No
Views	False

Sizes

Floor Size	530m ²
Land Size	13,780m ²

