



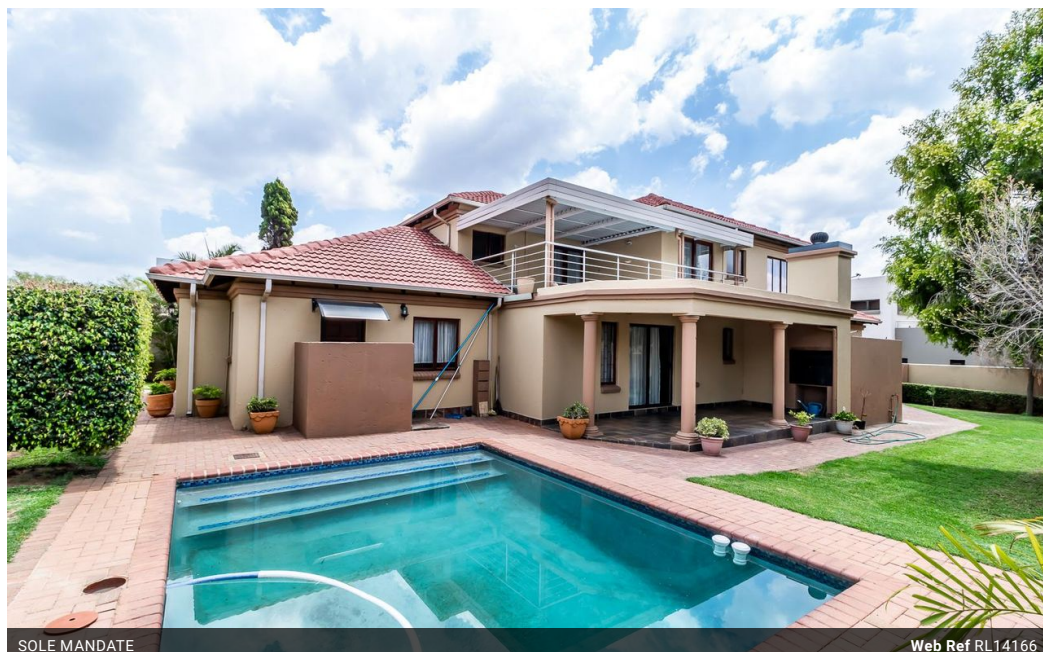
Kobus Eloff - Zambezi
Country Estate &
Montana Park
0812228960
Kobus@justimagineproperties.com

Contact Head Office

081 4042817

5 Portofino,
753 Old Farm Road,
Faerie Glen
Pretoria

4 Bedroom House For Sale in Zambezi Country Estate



SOLE MANDATE

Web Ref RL14166



R3,400,000

4 3 2

Monthly Bond Repayment R35,094.41

Calculated over 20 years at 11% with no deposit.

Transfer Costs R208,547.00 **Bond Costs** R45,955.00

These calculations are only a guide. Please ask your conveyancer for exact calculations.

Monthly Levy R2,000 **Monthly Rates** R2,236

Stunning and Functional Home for Sale in a Peaceful Crescent within Zambezi Country Estate

Exquisite 4-Bedroom Family Home in Zambezi Country Estate

Nestled in the prestigious Zambezi Country Estate, this magnificent property offers a blend of luxury, space, and modern living. Designed to accommodate every need, this home is perfect for families who enjoy both indoor comfort and outdoor entertainment.

Key Features:

4 Spacious Bedrooms:

Large windows in every room provide ample natural light. Built-in cupboards for plenty of storage. The master suite offers a luxurious retreat with an en-suite, full bathroom, a spacious walk-in closet, and east- and west-facing balconies that create a serene ambiance. While all bedrooms are generously sized, the primary bedroom includes additional space as well as a walk-in closet. Two of the other bedrooms also feature balconies, enhancing the appeal of this elegant home....

Features

Pets Allowed Yes

Interior

Bedrooms	4
Bathrooms	3
Kitchens	1
Recep. Rooms	3
Studies	1
Furnished	No

Exterior

Garages	2
Security	Yes
Dom. Accom.	1
Pool	Yes

Sizes

Floor Size	339m ²
Land Size	771m ²

Extras

2 x Solar Geyser Peaceful Crescent Entrance hall Double oven 3x Balconies Pool Aircon Laundry

